

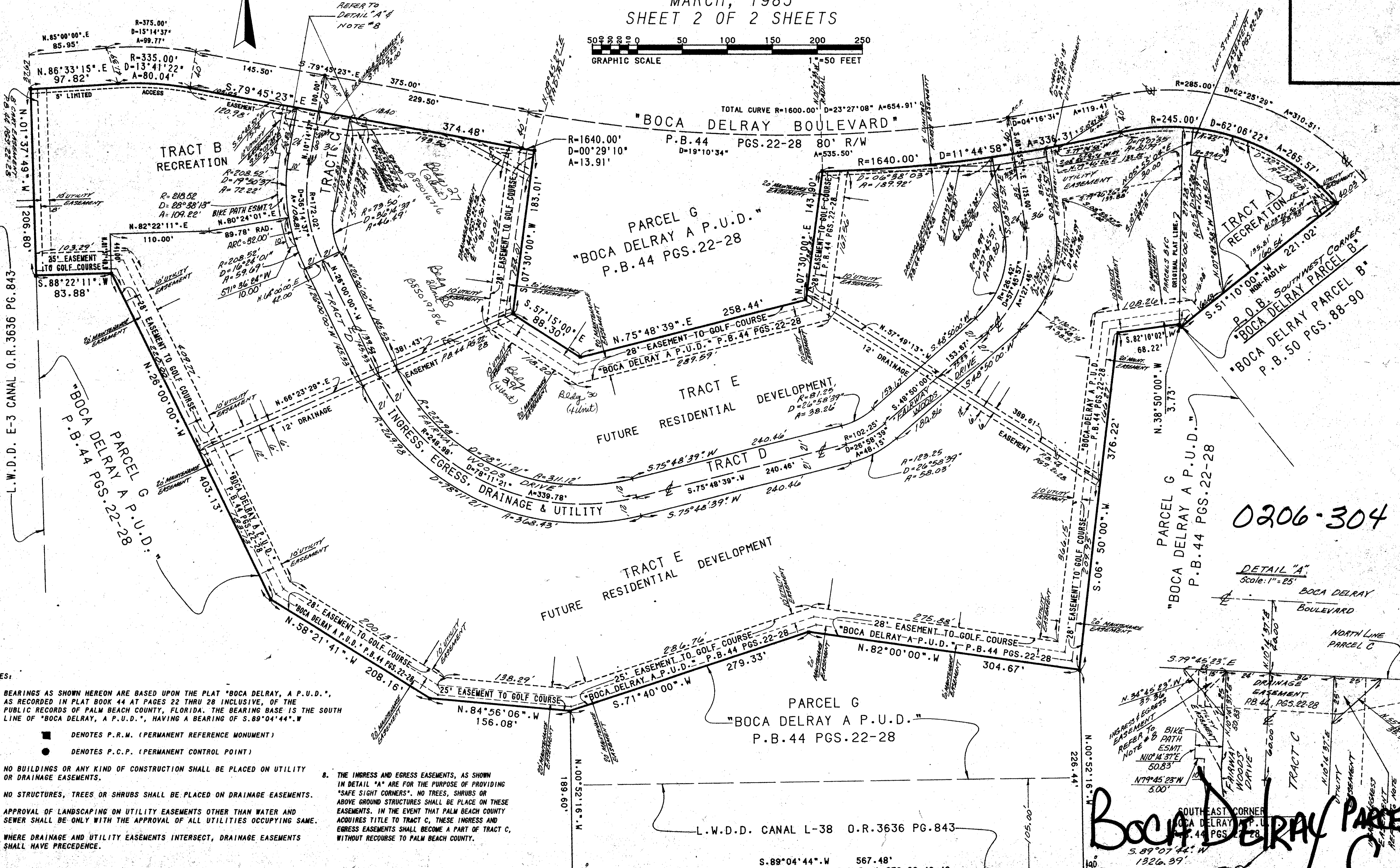
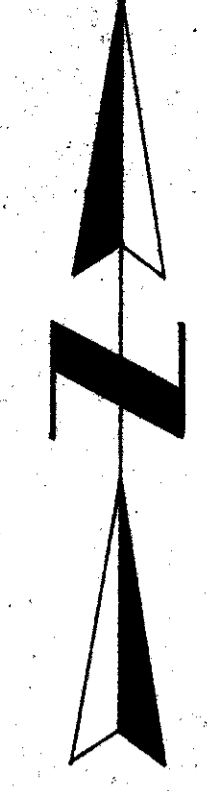
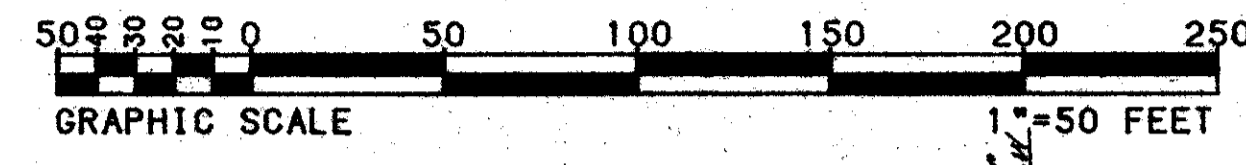
DRAWING NUMBER
517162

162

THIS INSTRUMENT WAS PREPARED BY:
JOHN H. FITSCHEN P.L.S.
CRAVEN THOMPSON & ASSOCIATES, INC.
5154 OKEECHOBEE BOULEVARD
WEST PALM BEACH, FLORIDA 33409

BOCA DELRAY PARCEL C

A REPLAT OF ALL OF PARCEL C, TOGETHER WITH A PORTION OF PARCEL B,
OF "BOCA DELRAY, A P.U.D.", AS RECORDED IN PLAT BOOK 44, AT PAGES 22
THRU 28 INCLUSIVE OF THE PUBLIC RECORDS OF PALM BEACH COUNTY, FLORIDA,
SITUATED IN SECTION 26, TOWNSHIP 46 SOUTH, RANGE 42 EAST, PALM BEACH COUNTY, FLORIDA.
MARCH, 1985
SHEET 2 OF 2 SHEETS



DRAWING NUMBER

DRAWING NUMBER

DRAWING NUMBER

- NOTES:
1. BEARINGS AS SHOWN HEREON ARE BASED UPON THE PLAT "BOCA DELRAY, A P.U.D.", AS RECORDED IN PLAT BOOK 44 AT PAGES 22 THRU 28 INCLUSIVE, OF THE PUBLIC RECORDS OF PALM BEACH COUNTY, FLORIDA. THE BEARING BASE IS THE SOUTH LINE OF "BOCA DELRAY, A P.U.D.", HAVING A BEARING OF S.89°04'44\".
 2. ■ DENOTES P.R.M. (PERMANENT REFERENCE MONUMENT)
 3. ● DENOTES P.C.P. (PERMANENT CONTROL POINT)
 4. NO BUILDINGS OR ANY KIND OF CONSTRUCTION SHALL BE PLACED ON UTILITY OR DRAINAGE EASEMENTS.
 5. NO STRUCTURES, TREES OR SHRUBS SHALL BE PLACED ON DRAINAGE EASEMENTS.
 6. APPROVAL OF LANDSCAPING ON UTILITY EASEMENTS OTHER THAN WATER AND SEWER SHALL BE ONLY WITH THE APPROVAL OF ALL UTILITIES OCCUPYING SAME.
 7. WHERE DRAINAGE AND UTILITY EASEMENTS INTERSECT, DRAINAGE EASEMENTS SHALL HAVE PRECEDENCE.
 8. THE INGRESS AND EGRESS EASEMENTS, AS SHOWN IN DETAIL "A" ARE FOR THE PURPOSE OF PROVIDING "SAFE SIGHT CORNERS". NO TREES, SHRUBS OR ABOVE GROUND STRUCTURES SHALL BE PLACED ON THESE EASEMENTS. IN THE EVENT THAT PALM BEACH COUNTY ACQUIRES TITLE TO TRACT C, THESE INGRESS AND EGRESS EASEMENTS SHALL BECOME A PART OF TRACT C, WITHOUT RECOURSE TO PALM BEACH COUNTY.

0206-304

DETAIL "A"
Scale: 1" = 25'

BOCA DELRAY PARCEL C